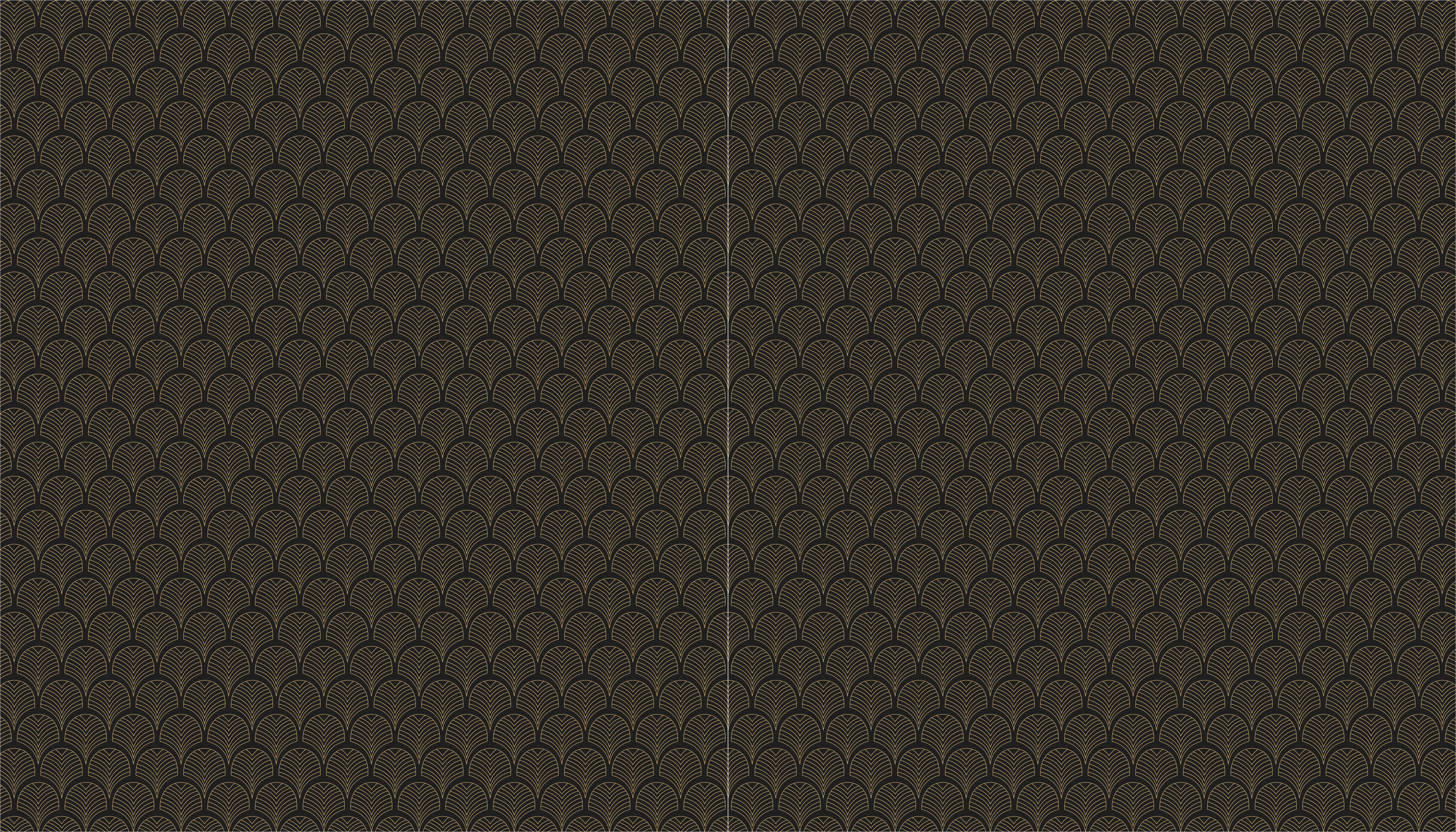




ELEMENT





QUINTESSENTIALLY PURE

WELCOME TO A HOME THAT BEFITS YOUR STATURE, WITH RESIDENCES
THAT SPAN ACROSS AN ENTIRE FLOOR, SETTLE DOWN IN A WORLD THAT IS
THE VERY ESSENCE OF PRIVACY AND EXCLUSIVITY.





SAMSARA is a privately held real estate development company established in 2015 with its base in Ahmedabad. The name SAMSARA originates from the Sanskrit scripture, and promulgates the ideology of the journey one takes towards realizing the truth. Inspired by this, SAMSARA was founded with a singular aim of helping customers along this journey by offering living and commercial spaces that will truly resonate with them and their lifestyles.

From a royal city to an emerging mega city, Ahmedabad is ever-evolving, reverberating and replete with anticipation – with one foot that is unflinchingly attached to the past; the other is ardently closing towards the future and the opportunities it holds. The existing dichotomy paired with the paradigm shift in consumer preferences and lifestyles has resulted in burgeoning ambitions waiting to be fulfilled; giving rise to an insatiable quest for spaces that can not only accommodate people – but also their dreams and ambitions. This is the backdrop around which SAMSARA is setting its roots firmly, with a vision of redefining the concept of living and working spaces by understanding and giving significance to what truly matters – the dreams associated behind them.

At SAMSARA, it is a constant pursuit and an unflinching commitment to ascertain that the connection between the spaces we fabricate and the lives entrenched around these very spaces, realize a sense of enrichment. Understanding and resonating with a myriad of lifestyles is almost a cultural constant here at SAMSARA – a lens through which we envisage each of our projects and each minor element that goes with it.

SAMSARA is currently amidst the development of upwards of 5-lakh sq. ft. of residential real estate in Ahmedabad.

“OUR VISION IS TO
TRANSLATE OUR WORK AND
IDEOLOGIES INTO THE MOST
TRUSTED AND SOUGHT-AFTER
BRAND IN THE EYES OF THE
CONSUMER WHEN IT COMES
TO BUYING AND RENTING
LIVING AND COMMERCIAL
SPACES, LOCALLY AND
NATIONALLY.”

A detailed, high-contrast black and white photograph of a mechanical watch movement. The image shows a complex arrangement of gears, including a large circular gear with eight spokes in the lower-left foreground, and various smaller gears and components like levers and screws in the background. The lighting creates strong highlights and deep shadows, emphasizing the metallic textures and the intricate craftsmanship of the mechanism.

privé

LUXURY IS IN THE DETAILS

Privé is built around the philosophy and ethos: LUXURY IS IN THE DETAILS.

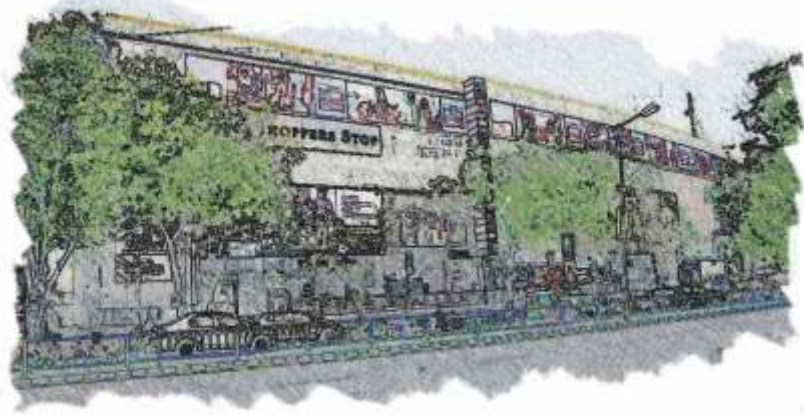
Intending at being an undeniable and unabashed moniker for luxury, class, elegance and exclusivity, Privé residences are made with an almost monastic devotion. The reputation and emotion attached with these residences truly make them one of a kind. Living spaces that are masterfully crafted to fulfill every desire are a rare find - reserved for a handful.

A rare living space demands the right setting and what better setting than to be at the center of it all. Based in Ambawadi, ELEMENT's residents will enjoy seamless access to any part of the city.

What defines Ambawadi is what defines Ahmedabad: its versatility and raw ambition, its transformation and purpose. Where the past is entwined with the new, Ambawadi is the ultimate landscape of society, culture, and commerce.



PARIMAL GARDEN
3 MINUTE DRIVE



CG SQUARE
5 MINUTE DRIVE



RIVER FRONT
10 MINUTE DRIVE



IIM-A
6 MINUTE DRIVE



HOTEL HYATT
9 MINUTE DRIVE

— AT THE CENTER OF —
THE GOOD LIFE



9TH STREET ARCHITECT

Q: What prompted you to take up the challenge of working on this project?

A: ELEMENT is a paradigm shift, with design concepts and state-of-the-art residences that seek to revolutionize living spaces in Ahmedabad – this project had all the right impetuses for an architect to truly cognize and grasp an idiosyncratic vision. This was an opportunity for me to truly develop as an architect and to influence design standards and to promote architecture as an art form.

Q: What was your vision and inspiration for your creation?

A: To create living spaces ensconced in privacy and to achieve a desired seclusion for the residents amidst a bustling arterial city street. The facade made of soundproof glass walls and a plantation courtyard that runs through the building with an automatic watering system, are testimony to this vision. The inspiration for ELEMENT comes from scattered sources; however works and ideologies of Le Corbusier have played a pivotal role in the inspiration for the project, such as the use of reinforced concrete and elemental geometric forms.

Q: Why did you choose to design a glass facade with exposed concrete work?

A: Experiencing architecture has several dimensions attached to it; this inherent characteristic is what makes it a unique art form. The materials of a building and their interaction with each other are what greatly enrich our perception of it. We have therefore selected intrinsically opposing material forms that inhabit the opposite spectrum of a scale to bring a natural equilibrium to our work, like rough and smooth, utilitarian and luxurious, ergo exposed concrete and glass.

Q: Do you believe your creation will impact the city of Ahmedabad and become a defining landmark?

A: When surrounded by a plethora of buildings, that form a city scape, a landmark serves a much more significant purpose than merely standing out; it effortlessly belongs. Quintessentially, it is not intended to be an absolute or definitive statement; rather it is meant to be a continuing dialogue. This is what truly gives a landmark its demeanor and the city scape its significance.

- INTERVIEW WITH SOURABH VERMA

A MANIFESTATION OF OUR DREAMS AND
YOUR DEEPEST DESIRES, ELEMENT
FORMS AN AVANT-GARDE AND
MINIMALISTIC SCULPTURE IN GLASS AND
EXPOSED CONCRETE, STANDING AS AN
ETERNAL SYMBOL OF AHMEDABAD'S
ASPIRATIONS AND UNRELENTING DRIVE.





FROM A FINELY – WROUGHT DOORKNOB TO THE MOST EXQUISITE OF EDIFICES, ELEMENT CELEBRATES THE SYNTHESIS OF UNDERSTATED LUXURY AND ARCHITECTURAL FINESSE LIKE NEVER BEFORE.

CRAFTSMANSHIP. DETAIL. TIMELESS DESIGN.

FEATURES

Easily Customizable Residences For Bespoke Interiors.

One Residence Per Floor With A Private Lift Foyer.

Floor To Ceiling Glass Walls For Unbeatable Panoramic Views.

A Green Courtyard For Each Residence.

State Of The Art Amenities – Swimming Pool, Fully-equipped Gym, Terrace Sky Deck.

Exclusive Rooms For Personal Storage.

Automated Residences With A Personal Concierge For A Distinctive Lifestyle.

Centrally Air-conditioned Residences With Italian Marble Flooring

Multi-level Automated Parking Facility

Hi-speed Elevators With Secure Access

Environmentally Sensitive Design With Water Recycling And Rain-water Harvesting

A Dedicated Estate Manager To Ensure The Smooth Functioning Of The Premises



AUTOMATION

AT ELEMENT, WE HAVE GONE BEYOND LUXURY, AND ENTERED THE NEXT LEVEL: TECHNO LUXURY.

Imagine a world where everything is controlled at the touch of a button. Where you can cool your bedroom with your cell phone, on your way back from work. Where electronic gates and private elevator foyers open at the swipe of a card. Where motion sensors turn on the lights for you, no sooner you step indoors. Where appliances are controlled and doors locked with the flick of a button and your staff is a buzz away. Also electronic surveillance that gives you peace of mind and tranquility, helping you relish the true comfort of home. The next level of luxury is here: techno – luxury.

- VRV automation with remote access temperature control
- Automatic drip irrigation watering system for courtyard
- Video door phone connected with main door lock
- Remote access DTH and Wi-Fi connectivity
- Intercom connectivity to residence staff quarter
- Residence Automation Provisioning with personal iPad
- Motion Sensor lighting



INTELLIGENT DESIGN

WHY SHARE THE FLOOR WHEN YOU CAN OWN IT?

Taking privacy to a whole new level, your home will be a private haven in the sky, detached from neighboring residences and with all 4 sides open and no walls shared, ELEMENT's innovative design ensures natural light in each residence. Walk-in-closets that seamlessly merges with the bathrooms in each bedroom, result in increased functionality and utilization of space. Pivot glass windows ensure you breathe in fresh air and your residence gets enough circulation, while reducing the need for air conditioning. Every residence will have access to high-speed internet, and advanced DTH connection.



CUSTOMIZABLE RESIDENCES

BECAUSE NO TWO RESIDENCES SHOULD EVER BE ALIKE.

ELEMENT offers expansive and easily customizable residences with an understated elegance for truly bespoke interiors. For the first time in Ahmedabad; with a choice of an array of flooring and fitting options, your residence will truly be – one of a kind.

Indulge in making the residence your home with a plethora of choices in :

- Flooring for the entire residence
- Kitchen Dado
- Bath Dado
- Bath Fixtures & Fittings



6-TIER SECURITY

CONSIDER SECURITY A GIVEN.

At ELEMENT, a revolutionary 6-tier security system has been deployed. The system includes CCTV monitoring, RFID identification of vehicles, access control with biometric fingerprint access, video door phone, fire-fighting systems for the entire premises and separate elevators for the service staff. These security measures guarantee a life of complete peace and privilege for you and your loved ones.

A WORLD OF LUXURY

ELEMENT marks the arrival of private services and amenities with a pedigree previously unavailable in Ahmedabad; reflecting the lifestyle of the selected few that will call ELEMENT home. The carefully handpicked luxuries on offer are a result of the philosophy and ethos behind Privé: LUXURY IS IN THE DETAILS.

GYM

a multi-purpose room with wooden and soft board flooring, and all the necessary equipment to keep one in shape. Air-conditioned and easily adaptable, the gym at ELEMENT offers the luxury of space – fit for those early morning yoga sessions or the Sunday Zumba workouts.

STORAGE

a personal storage means that now you don't need to get rid of your old stuff. Whether it is your son's old school science project, your daughter's pretty pink bike, or extra lawn chairs for those fortnightly parties. The storage will ensure that your residence remains clutter-free and yet your personal belongings are a lift – ride away.

PERSONAL CONCIERGE

whether you need your linen shirt ironed for the evening party, get your leaking faucet fixed, or get your groceries delivered to your doorstep – the personal concierge is a one stop solution with all contacts you could possibly need tucked neatly into an i-Pad.

ESTATE MANAGER

ELEMENT will appoint an estate manager to oversee the smooth functioning of the premises. The caretaker will be taking care of, and will be responsible for all maintenance activities along with handling any issues or difficulties a particular member or the society faces.



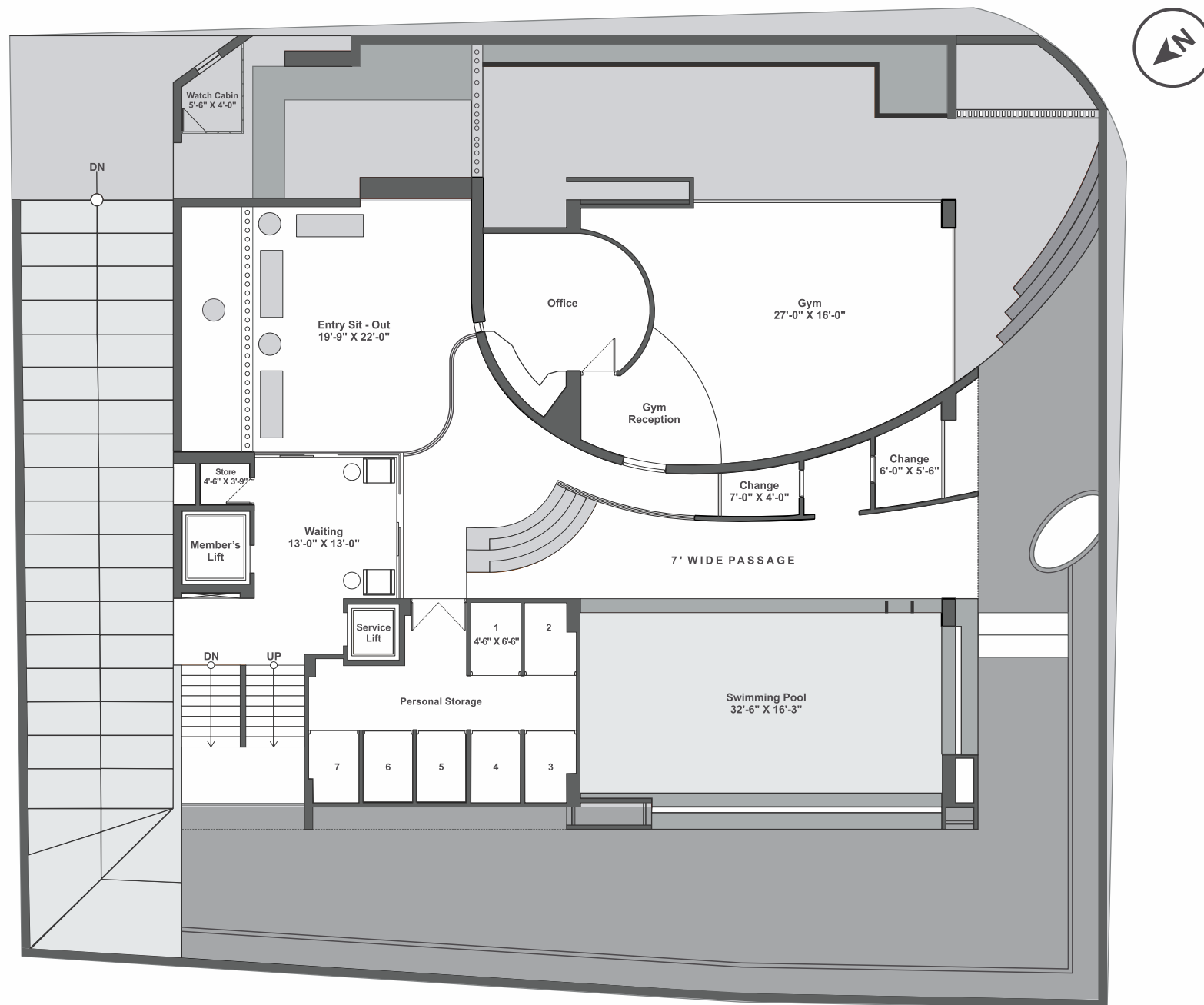
SWIMMING POOL

a semi-open, and strikingly turquoise swimming pool, tucked neatly inside the building for the much needed privacy, yet open – so that the view from the garden is unhindered. An adjacent sit out made from wood and enveloped by creepers will ensure some much needed alone time with a book – poolside.

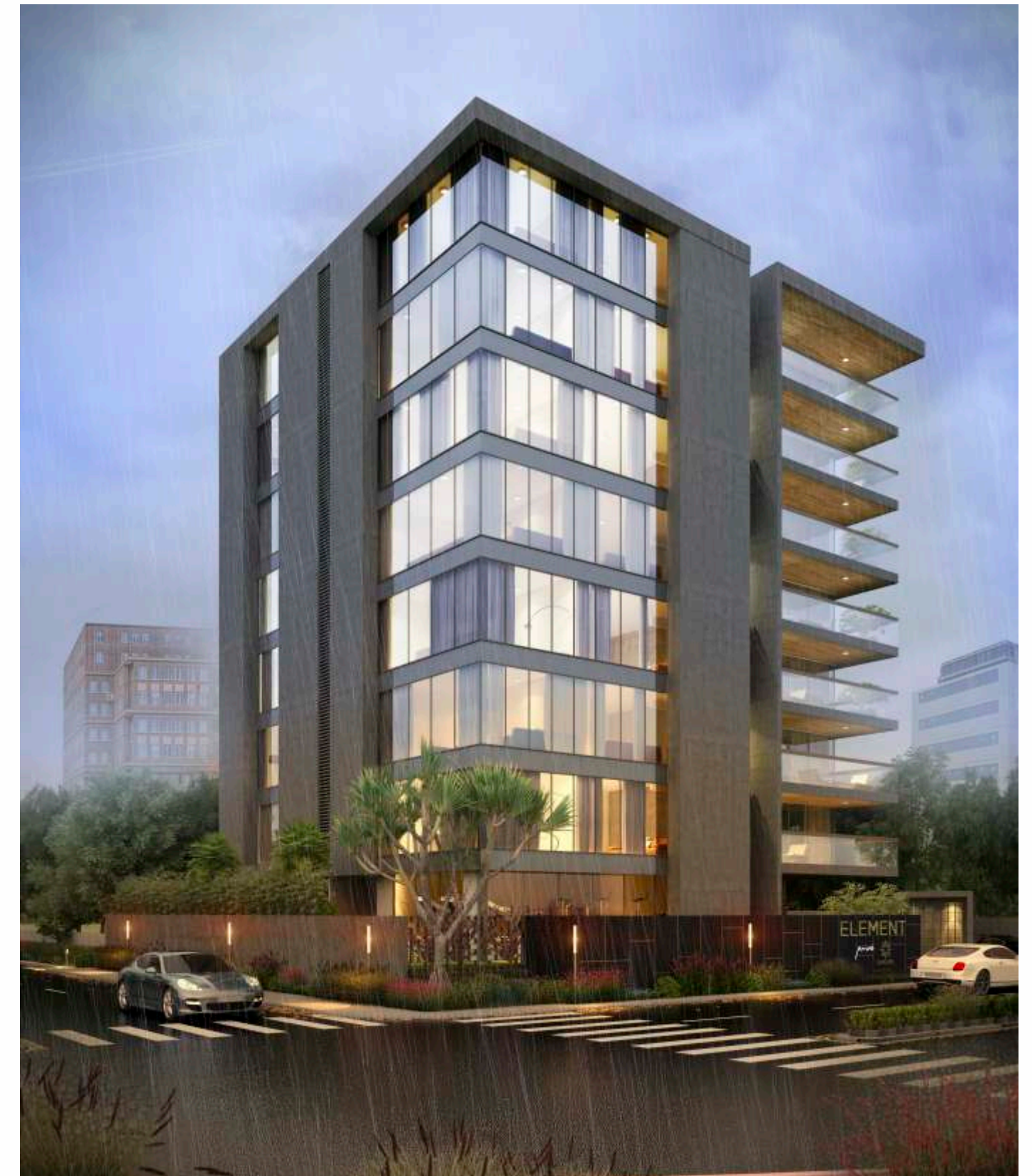
TERRACE SKYDECK

under the beauty of the night sky, the terrace is the ultimate sit-out, landscaped to perfection. Outdoor cane furniture, a warm fire emanating an ethereal glow, the cool evening breeze – a perfect backdrop for a relaxing evening.





GROUND LAYOUT





180° PANORAMIC VIEW

A cantilevered balcony that can double up into a party deck for the days you need to let your hair down, or into an extended living room for that Sunday family brunch.



RESIDENCE LAYOUT

RESIDENCES WITH A DESIGN LAYOUT THAT UNDERSTAND YOUR CONCEPT OF PRIVACY.

ELEMENT introduces residences with carefully planned zones – from the drawing room and balcony that should be open to guests, to recreational and dining spaces that are considered semi-private, and finally the bedrooms that encapsulate a carefully planned living room for complete privacy, we have gone all out with our residences to offer an experience akin to a villa in the sky.

1	ENTRANCE FOYER	7'-0" x 8'-0"	8B	STORE	6'-0" x 5'-0"
1A	RECEPTION	5'-0" x 6'-0"	9	LIVING	21'-0" x 16'-0"
1B	ENTRANCE CLOSET	5'-4" x 2'-0"	10	BEDROOM	13'-3" x 19'-0"
2	POWDER	4'-6" x 3'-9"	10A	WIC/BATH	7'-0" x 18'-9"
3	DRAWING	18'-6" x 14'-0"	11	BEDROOM	13'-3" x 19'-0"
4	BALCONY	26'-6" x 8'-0"	11A	WIC/BATH	13'-3" x 11'-6"
4A	COURTYARD	7'-6" x 5'-3"	12	BEDROOM	13'-3" x 18'-0"
5	ACTIVITY ROOM	14'-0" x 11'-3"	12A	WIC/BATH	12'-6" x 6'-0"
6	POOJA	5'-9" x 4'-9"	13	BEDROOM	13'-3" x 18'-0"
7	DINING	14'-0" x 16'-0"	13A	WIC/BATH	7'-0" x 17'-6"
8	KITCHEN	14'-6" x 13'-0"	14	STAFF QUARTER	8'-3" x 7'-0"
8A	KITCHEN YARD	11'-6" x 5'-0"	14A	BATH	5'-6" x 3'-6"

A bedroom is a sanctuary, it is all about comfort and not the abstract idea of it; but real comfort - the kind where you can happily drift off for an hour or two on a lazy Sunday afternoon, with your dog at your feet.





The residence takes on a subtle splendor warmed by the days' light streaming in unfettered, through large windows. A sense of expanse, of sophistication and simplicity combine to create a world of total comfort and luxury at ELEMENT.



Interiors that make up your living space directly impact your mood and sense of well – being. Precisely why we have left the columns and beams unfinished in exposed concrete. This lends a minimalistic beauty to the residence that is reminiscent of the building façade, while the subtle hues of grey gently pacify the interiors.

Every aspect of your residence has been carefully thought through. We understand your need to be outside when the weather is just right. Now you can do it from the comfort and privacy of your own home. An enormous 26 – foot stretch from the living room, that gives way to a spectacular green expanse that makes you feel one with the city.



SPECIFICATIONS

RESIDENCE

FOYER

- personal entrance foyer for each residence

BRICK WORK & PLASTER

- walls: brick masonry with single coat
- mala plaster and Birla wall putty
- ceilings & beams: exposed RCC finish

CONNECTIVITY

- land line phone conduit
- DTH TV conduit
- Wi-Fi Broadband connection conduit

WINDOWS

- aluminum section UPVC window in DGU glass
- aluminum section sliding doors in DGU glass

AIR CONDITIONING

- fully air-conditioned residence with VRV system

WATERPROOFING

- water proofing in all toilets and kitchen yard

BATH&TOILET

- italian marble flooring and dado up till beam bottom
- marble counter top with ceramic basin
- rainshower panels with body jets and glass enclosures
- floor mounted WC
- high quality plumbing fixtures

FLOORING

- entire residence in Italian marble
- kitchen yard flooring and dado in high-density tiles
- balcony in galicha (encaustic tiles) flooring and wooden ceiling

ELECTRIFICATION

- concealed electrical conduits with insulated copper wires
- provision for cable and telephone points in the entire residence
- all sockets with protective M.C.B.

AUTOMATION

- VRV automation with remote access temperature control
- video door phone connected with main door lock
- intercom connectivity to staff quarter
- sensor lights provisioning and light touch panels in the entire residence
- automatic drip irrigation watering system for courtyard

KITCHEN

- polished telephone black granite platform
- superior quality S.S. sink and drain board in kitchen and kitchen yard
- built in RO water purification system
- ceramic tiles upto lintel level
- kota shelf in store
- provision for electric chimney
- gas geyser in wash area
- garbage crusher

DOORS

- door architrave in teak wood
- main door in solid wood
- flush internal doors with double side veneer
- bath/store/kitchen yard with single side
- veneer and other side laminate finish
- superior quality door accessories and hardware

A BUILDING DESIGN THAT JUST HAS AN AESTHETIC APPEAL, BUT IS NOT UTILITARIAN IN ITS ESSENCE IS SACRILEGIOUS.

ELEMENT is the result of a responsibly source network of professionals including contractors, consultants, and architects with a vision of providing living spaces that take care of the necessities above else and require minimal maintenance support.

BUILDING

LOBBY

- a spacious entrance lobby and a beautifully landscaped atrium lounge

LIFT

- automatic high speed members lift and a separate staff lift

STRUCTURE

- earthquake resistant RCC frame structure
- external walls in exposed RCC

ANTI TERMITE TREATMENT

- long-lasting pest control treatment on all walls and ceilings

FLOORING

- pavers/kota in ramp and basement
- china mosaic in terrace area
- stair/landing in matt finished granite with anti-skid markings

FIRE AND SAFETY

- fire extinguishers on each floor and common areas
- fire sprinkler system in basement car park

SECURITY

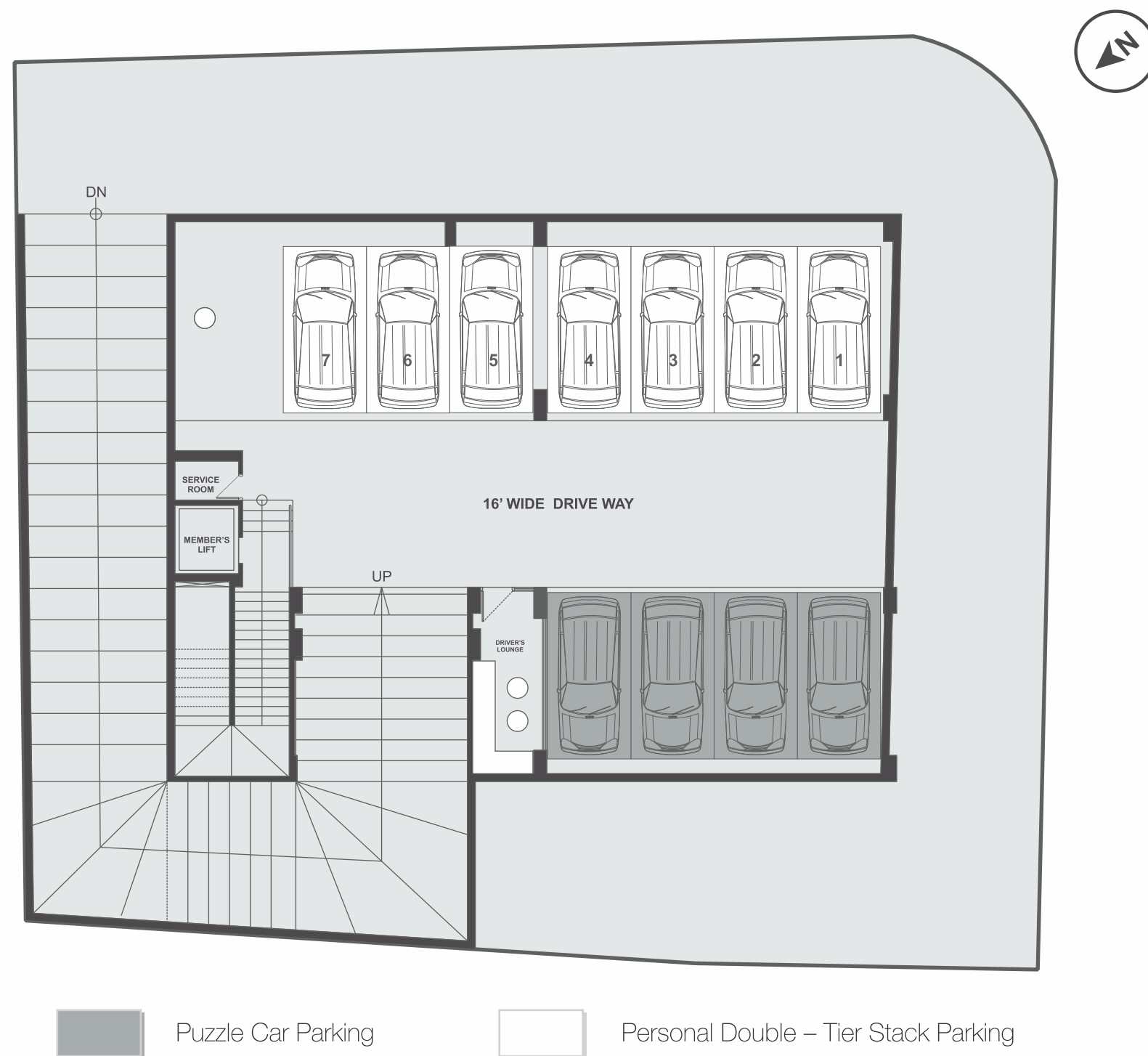
- CCTV surveillance
- 24*7 Security Personnel
- RFID identification for vehicle entry
- access control doors with biometric
- fingerprint access to common areas

UTILITIES

- PNG gas connection in each residence
- DG back-up
- central water softening system
- central pressure boosting system
- 24*7 backup borewell and corporation supply rainwater harvesting

PARKING

- 3 allotted car parks
- automated multi-level puzzle and stack
- basement parking system
- driver's lounge with intercom facility



PARKING IS A NECESSITY, BUT SO IS EFFICIENCY.

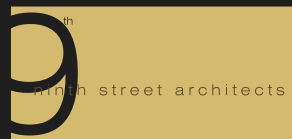
A personal double – tier stack parking for each residence ensures just that. Also a common puzzle car park system, automated for your ease. At a press of the button your car will be safely delivered, without the hassle of removing any other car to reach to yours. At ELEMENT we have really thought of everything.

BASEMENT LAYOUT

PROJECT PARTNERS

PARTNERING WITH THE BEST TO GIVE YOU THE BEST.

ARCHITECT



STRUCTURAL CONSULTANT

DIMENSIONS

ELECTRICAL CONSULTANT



PLUMBING CONSULTANT



HVAC CONSULTANT



BROCHURE

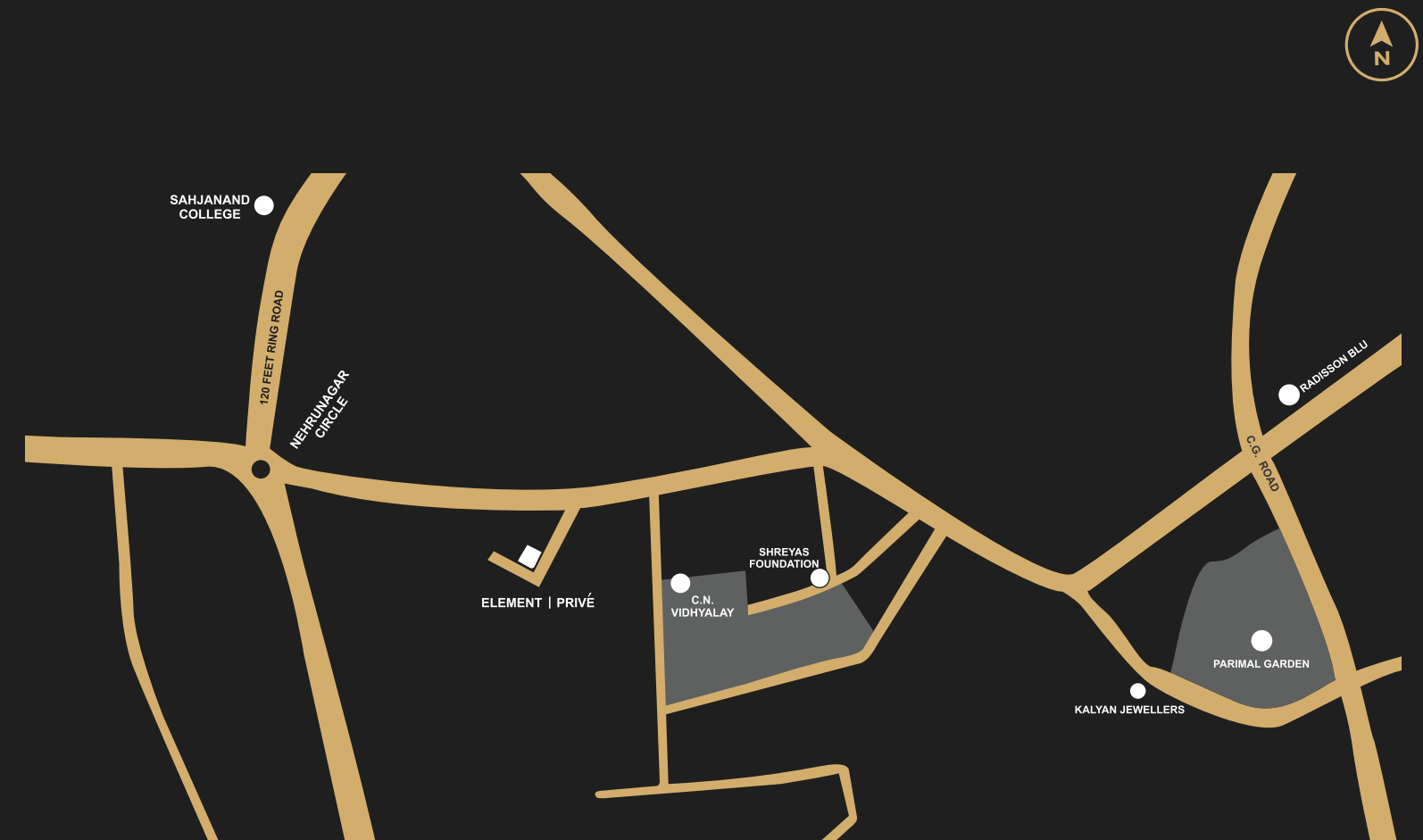


IMAGES



DISCLAIMER

The developer reserves the rights to change or revise or make any modifications, additions or alterations in the scheme as a whole or any details therein, at their sole discretion without any prior notice. Such changes would be binding to all members. Interiors and fit outs are not part of standard offerings. All the architectural and interior views are computer generated graphic artist impressions and a simulated interpretation of actual property for better customer understanding. All the dimensions given herein are approximate and unfinished. This brochure is strictly for private circulation only and not an offer for sales and does not form part of any sales process. It is only for an easy presentation of the project and should not be treated as a legal document. Subject to Ahmedabad jurisdiction.



OFFICE ADDRESS:

SAMSARA HQ, 2nd Floor, House 1, Magnet Corporate Park, Near Sola Bridge, S.G. Highway, Thaltej, Ahmedabad – 380 054.

SITE ADDRESS:

ELEMENT, Navyug Society, Behind CN Vidhyalaya, Ambawadi, Ahmedabad – 380 015.



